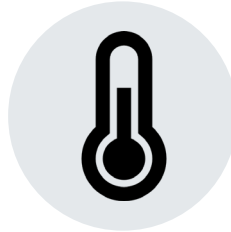


Temperature measurement in GERI incubators.



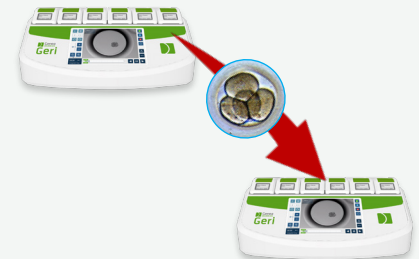
Scope of the document:

Here, we suggest a method of using **LEO** to measure the temperature in **GERI** incubators.



PRECAUTIONS:

- Please be cautious with your cultured embryos, considering that during the measurement procedure a temperature probe will be inserted into the chamber.
- Read the manuals for the incubator and LEO for usage and safety details.



GENERAL CONSIDERATIONS:



Evaluate the need for chamber cleaning and disinfection after working on the incubator.



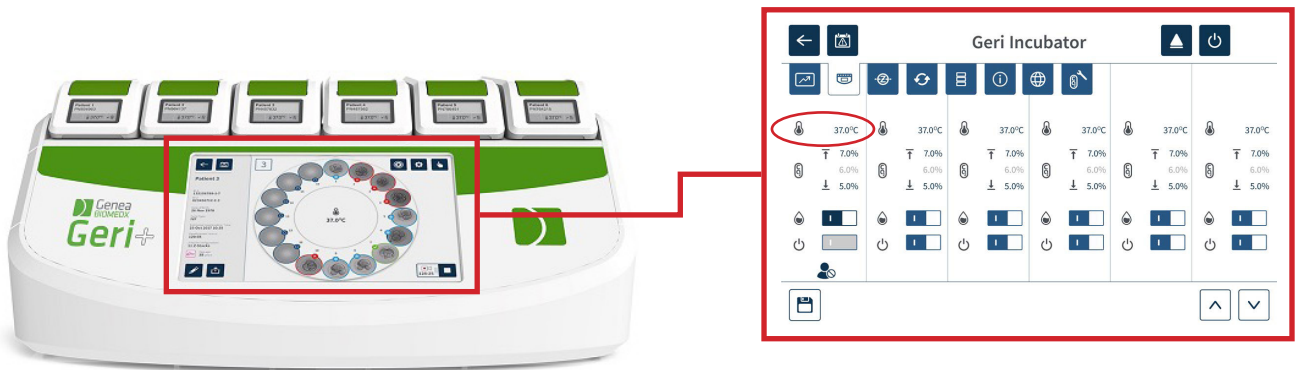
As good practice, it is recommended to have LEO charged before use, and not to charge it during use.



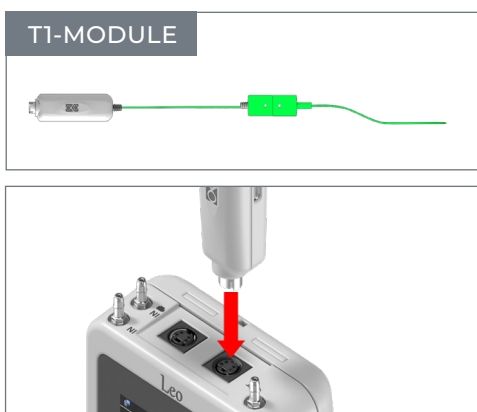
Always read the manual of the devices.

MEASURING PROCEDURE:

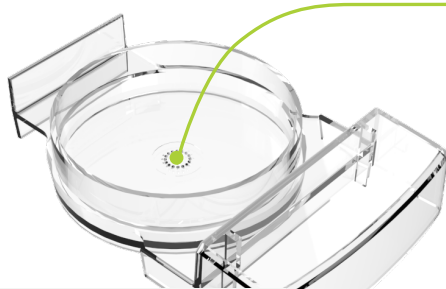
STEP 1 If you prefer, set **GERI** to **37.0°C** by using the configuration menu of the incubator.



STEP 2 Place **LEO's temperature probe (T1-MODULE)** inside the **Geri Dish**, as indicated in the following schematic. You can use two T1-MODULEs together to measure 2 chambers.

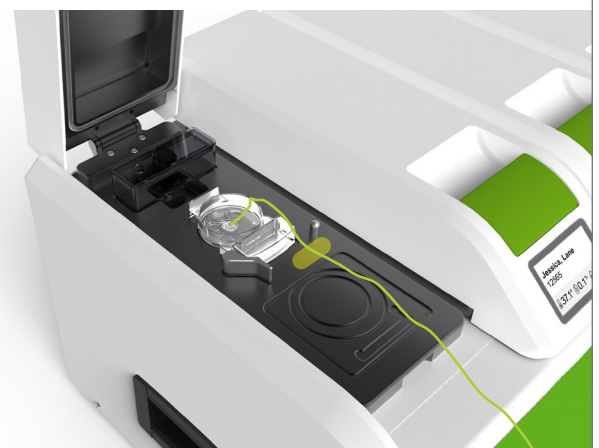


STEP 3 Fill the dish with media and oil. Place the cable of **LEO's** probe so that the tip of the sensor touches the bottom of the central microwell dish, at the position where the embryos sit, and put the dish lid.



i Usual media and oil volumes are recommended.

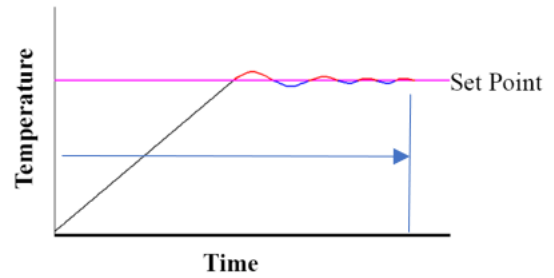
STEP 4 Fix the cable of **LEO's** probe with adhesive tapes if needed, so it will not move from its position.



STEP 5 Close the chamber lids.



STEP 6 Give enough time for **GERI** and the media to thermally stabilize.



If the temperature on **LEO's** display is stable for a period of 10 minutes, proceed to **Step 7**.

STEP 7 Take the reading from **LEO**.



Read LEO User Manual for details.

STEP 8 Remove **LEO's** temperature probe from **GERI**.

